



Duplex hydraulic forklifts

CM 9DCL

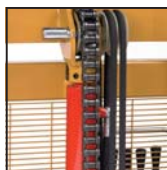


*Hydraulic forklift suitable to small power tractors.
Light and professional.*

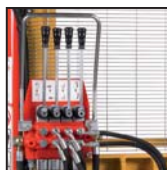
- Cylindrical roller bearings
- Standard lifting chain
- "U" shaped hot rolled steel profiles
- Double effect lifting cylinder
- Cat.1 three point linkage
- Distributor with 4 levers
- Side shift sliding on self lubricating bushes
- Adjustable and pliable forks
- Tilting cylinder with adjustable junction
- Connecting hoses to the tractor



Straight roller radial bearings



Standard lifting chain



Distributor with 4 levers



Adjustable and pliable forks



Side shift



Hot-rolled steel profiles

CM 9DCL

Model	Load capacity Kg	Lifting height mm	Overall dimensions mm	Weight Kg
9 DCL 1660	900	1660	1430	230
9 DCL 2000	900	2000	1600	240
9 DCL 2200	900	2200	1700	250
9 DCL 2500	900	2500	1850	270
9 DCL 3000	900	3000	2100	300